

WEATHER STATION AT MY SCHOOL

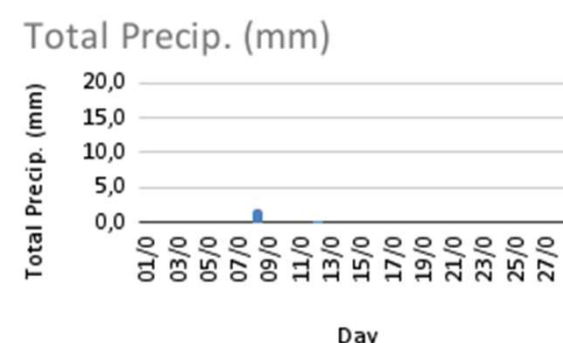
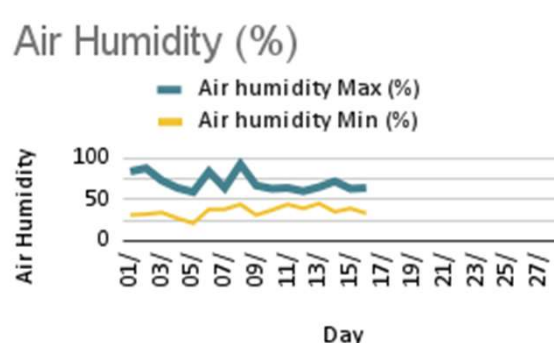
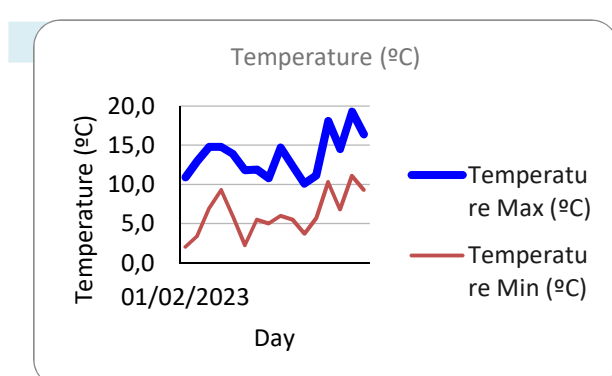
Agrupamento de Escolas Martinho Árias - Soure - Portugal

FEBRUARY 2023

Station: Soure (CIM)

Grade	Student	Day	Temperature Max (°C)	Temperature Min (°C)	Total Precip. (mm)	MaxWind gust (Kmh)/ Direction	Air humidity Max (%)	Air humidity Min (%)	sky/types of clouds*	Atmm Pressure (hPa)
8°C	Ana Dias	01/02/2023	10,9	2,0	0.0	47,5 /E	84	31	clear skies	-----
8°D	Bruna Santos	02/02/2023	13,0	3,4	0,0	27,0 /E	88	32	clear skies	-----
8°E	Dinis Melo	03/02/2023	14,8	7,0	0,0	30,6 /N	73	34	clear skies	-----
8°A	Simone Gonçalves	04/02/2023	14,8	9,3	0,0	27,4/NE	64	27	clear skies	-----
8°B	Joana Bernardes	05/02/2023	13,9	5,9	0,0	61,6/NE	59	21	clear skies	-----
8°C	Guilherme Silva	06/02/2023	11,8	2,2	0,0	56,9/E	84	38	clear skies	-----
8°D	Simão Coelho	07/02/2023	11,9	5,5	0,0	36,5/E	64	38	clear skies / cloudy sky with cumulus	-----
8°E	Laura e Leonor Almeida	08/02/2023	10,8	5,0	1,8	43,6/SE	93	44	very cloudy sky with nimbostratus	-----
8°A	Matilde Gonçalves	09/02/2023	14,7	6,0	0,0	61,6/SE	67	31	clear skies	-----
8°B	Simão Costa	10/02/2023	12,4	5,5	0,0	79,6/SE	63	37	clear skies / cloudy sky with cirrus, and cirrostratus.	-----
8°C	Ana Dias	11/02/2023	10,1	3,7	0,0	59,4/SE	64	44	cloudy sky with cirrus, and cirrostratus.	-----
8°D	Bruna Santos	12/02/2023	11,1	5,7	0,1	50,4/SE	60	39	cloudy sky / very cloudy sky with cirrostratus, and cirrocumulus	-----
8°E	Dinis Melo	13/02/2023	18,1	10,3	0.0	43,3/NW	65	45	cloudy sky / very cloudy sky with cirrostratus, altocumulus and stratocumulus	-----
8°A	Simone Gonçalves	14/02/2023	14,5	6,8	0,0	80.6/SE	72	35	cloudy sky / very cloudy sky with cirrostratus, altocumulus and stratocumulus	-----
8°B	Joana Bernardes	15/02/2023	19,3	11,1	0,0	12,6/E	63	39	clear skies	-----
8°C	Guilherme Silva	16/02/2023	16,4	9,3	0,0	18,7/NE	64	33	clear skies	-----

in: <https://www.ipma.pt/en/otempo/obs.superficie/table-top-stations-all.jsp>



The first half of February was predominantly dry and cold. This was due to the strong influence of the Azores anticyclone, which only allowed the passage of a cold front in the occlusion phase in the middle of this period. Throughout the period under analysis, as the cold air descending from the interior of the European continent was warming up, we could notice that the maximum and minimum temperatures were progressively increasing and the daily temperature range was decreasing. There is also a progressive decrease in relative humidity (minimum and maximum) caused by the subsidence of the air.